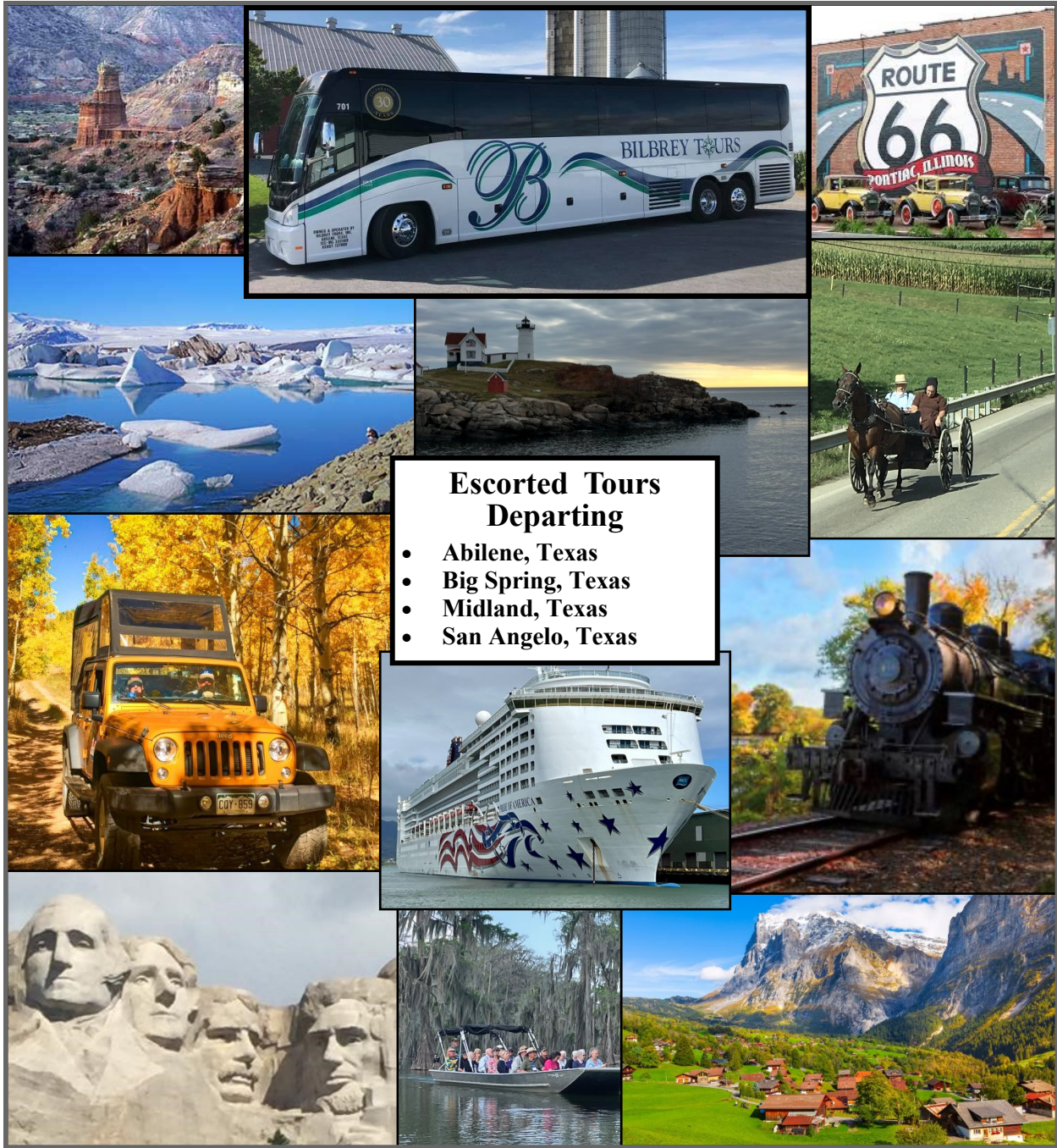


2026 Escorted Tours

BILBREY TOURS



Escorted Tours Departing

- Abilene, Texas
- Big Spring, Texas
- Midland, Texas
- San Angelo, Texas

3262 South 27th Street, Abilene, Texas 79605

(325) 692-1308 or 1-888-692-1308

January 2026

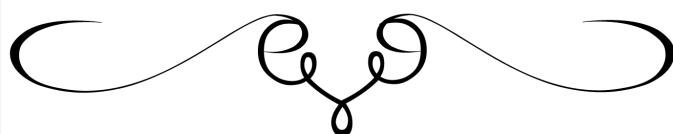
January
2026 Edition

Bilbrey Tours, Inc.



Index

Day Trips.....	3
2026 Tours.....	4-11
2027 Tour.....	11



2026

February:

Iceland's Magical Northern Lights.....	4
--	---

March:

New Orleans and Louisiana's Cajun Country.....	4
Azaleas & Dogwoods.....	4

April:

Great American Road Trip.....	5
<i>Seven Brides for Seven Brothers</i>	3

May:

Spring Mystery Tour.....	5
Great Lakes Grandeur.....	5

June:

Palo Duro Canyon.....	6
Atlantic Coastal Maine.....	6

July:

Indiana Amish Country.....	6
Texas Rangers Game.....	3

August:

<i>Hallmark'ed</i>	3
Exploring the Dakotas.....	7
Alpine Swiss Villages & Rails.....	7

Bilbrey Tours Tips

1. You may sign up on a tour after final payment date, if space is available.
2. Book early on International Tours, Cruises and Fly-Ins to guarantee your seat due to airline availability.
3. An optional **Travel Insurance** plan is available for purchase on all tours through TripAssure. Bilbrey Tours encourages the purchase of a Travel Protection Plan to help protect your investment, your belongings and most importantly you! Travel Insurance is offered at a starting rate of 7% of your total tour cost. You can find information and full instructions at www.bilbreytours.com

September:

Exploring the Dakotas.....	7
Hawaii Cruise.....	8
Get Your Kicks on Route 66.....	8
Golden Aspens of Colorado.....	9

October:

Fall Trains & Foliage of New England.....	9
Autumn at the Arboretum.....	3
Autumn Trails in the Texas Hill Country.....	10

November:

Branson Christmas.....	10
------------------------	----

December:

Dickens on the Strand.....	10
The Gift of Christmas.....	11
Nashville Opryland Christmas.....	11
<i>Holiday Inn</i>	3

2027

April:

Mediterranean Cruise.....	11
---------------------------	----



PASSPORT REQUIREMENTS

- Passports are required for all travel outside the United States.

January
2026 Edition

Bilbrey Tours, Inc.



Day Trips

Seven Brides for Seven Brothers

Plaza Theater - Cleburne, TX

Saturday, April 11, 2026

Departing Abilene

Highlights Include:

- Matinee at Plaza Theater in the heart of historic downtown Cleburne, TX
- *Seven Brides for Seven Brothers* is set in the rugged Oregon frontier, where a group of rowdy backwoodsmen set out to find wives with hilarious and heartwarming results. Featuring energetic dancing, catchy tunes and a charming love story at its core.
- Lunch included

\$185 per person

\$25 due upon booking - Final due February 25, 2026

Texas Rangers vs. Houston Astros Sunday, July 12, 2026

Departing Abilene

Highlights Include:

- Texas Rangers vs. Houston Astros at Globe Life Field in Arlington



\$179 per person

\$25 due upon booking - Final due May 28, 2026

Hallmark'ed

Plaza Theater - Cleburne, TX

Saturday, August 1, 2026

Departing Abilene

Highlights Include:

- Matinee at Plaza Theater in the heart of historic downtown Cleburne, TX
- *Hallmark'ed* - a new musical that hilariously spoofs the beloved tropes of your favorite romance movies! With toe-tapping original tunes, laugh-out-loud hilarity, and a heartwarming message at its core.
- Lunch included

\$185 per person

\$25 due upon booking - Final due June 17, 2026

Autumn at the Arboretum Wednesday, October 14, 2026

Departing Abilene

Highlights Include:

- **Dallas Arboretum** is a favorite Fall tradition. The fall festival is a spectacular show of color with 4,500 Chrysanthemums, along with 150,000 fall blooming plants.
- Internationally acclaimed Pumpkin Village features more than 100,000 pumpkins, squash, and gourds.
- Named "One of the World's 15 Most Breathtaking Gardens" by Architectural Digest.
- Lunch included at the De Golyer House

\$199 per person

\$25 due upon booking - Final due August 14, 2026



Holiday Inn

Granbury Opera House

Saturday, December 12, 2026

Departing Abilene

Highlights Include:

- Shopping and browsing Granbury, TX's historic town square
- *Holiday Inn* - Irving Berlin's delightful holiday musical. Jim leaves the bright lights of show business behind to settle down on his farmhouse in Connecticut... but life just isn't the same without a bit of song and dance. Jim's luck takes a spectacular turn when he meets Linda, a spirited schoolteacher with talent to spare. Together they turn the farmhouse into a fabulous inn with dazzling performances to celebrate each holiday, from Thanksgiving to the Fourth of July.

\$159 per person

\$25 due upon booking - Final due October 12, 2026

January
2026 Edition

Bilbrey Tours, Inc.



2026 Tours



Iceland's Magical Northern Lights **February 27 - March 6*, 2026 (Fly)** (7 days - 6 nights)

Departing Abilene

Highlights Include:

- Roundtrip transportation to DFW
- Roundtrip air from DFW
- Reykjavík
- Northern Lights Cruise
- Search for the Northern Lights
- Golden Circle
- Thingvellir National Park
- Gullfoss
- Lava Exhibition Center
- Vik
- Seljalandsfoss
- Skógar Museum
- Skógafoss
- Sólheimajökull Glacier
- Jökulsárlón Glacial Lagoon
- Blue Lagoon
- *Overnight in DFW area on March 6
- Meals: 6 breakfasts, 5 dinners

\$5579 per person (2 people per room)

\$6129 per person (1 person per room)

Full payment due upon booking

Medicare does not pay outside the United States
Tour is operated by Collette Vacations

NOTE: Passport Required



**Tour is on
Standby**

Join Bilbrey Tours as we travel throughout our great nation for the Semiquincentennial -- the **250th Anniversary of the United States** -- to celebrate our freedom, democracy, and renewal.

New Orleans and Louisiana's Cajun Country **March 3 - 9, 2026** (7 days - 6 nights)

**Tour is on
Standby**

Departing Abilene, Big Spring, Midland and San Angelo
Highlights Include:

- 3 nights in New Orleans
- New Orleans City Tour
- WWII Museum
- Global Wildlife Safari
- Jazz Lunch Cruise
- Mardi Gras World
- Oak Alley Plantation
- Swamp Tour
- Meals: 6 continental breakfasts, 5 lunches or dinners



\$2459 per person (2 people per room)

\$3189 per person (1 person per room)

Full payment due upon booking

Azaleas and Dogwoods **March 26 - 29, 2026** (4 days - 3 nights)

Departing Abilene & San Angelo

Highlights Include:

- 3 nights in Tyler
- Azalea Trail in Tyler
- Texas State Railroad excursion
- Tyler Rose Garden
- Davey Dogwood Park
- Southfork Ranch
- American Freedom Museum
- Meals: 3 breakfasts, 5 lunches or dinners



\$1079 per person (2 people per room)

\$1269 per person (1 person per room)

\$25 due upon booking - Final due February 6, 2026

**January
2026 Edition**

Bilbrey Tours, Inc.



**Great American Road Trip
Route 66 (Eastbound)
April 8 - 17, 2026
(10 days - 9 nights)**

Celebrating the 100th Anniversary of Route 66, Bilbrey Tours offers a nostalgic eastbound tour highlighting Route 66 through Texas, Oklahoma, Kansas (all 12.8 miles), Missouri, and Illinois, the official beginning of Route 66.

Departing Abilene, Big Spring, Midland and San Angelo
Highlights Include:

- 100th Anniversary of Route 66
- Route 66 Neon Park and Historical Village (Tulsa)
- Will Rogers Memorial Museum (Claremore, OK)
- Springfield, MO: the birthplace of Route 66
- Meramec Caverns
- St Louis, MO
- Cathedral Basilica of St Louis
- Chicago, IL: the official beginning of Route 66
- Chicago Architecture Cruise
- Breakfast at Lou Mitchell's
- Illinois Route 66 Hall of Fame
- Abraham Lincoln Presidential Library
- National Cowboy & Western Heritage Museum
- Pops 66 Soda Ranch
- Meals: 1 breakfast, 8 continental breakfasts, 7 lunches or dinners



\$3145 per person (2 people per room)
\$3930 per person (1 person per room)
\$50 due upon booking - Final due February 3, 2026



**Spring Mystery Tour
May 1 - 7, 2026
(7 days - 6 nights)**

Departing Abilene, Big Spring, Midland and San Angelo
Highlights Include:

- Join us on our Spring Mystery Tour to an unknown destination!
- Meals: 6 continental breakfasts, 7 lunches or dinners

\$2985 per person (2 people per room)
\$3715 per person (1 person per room)
\$25 due upon booking - Final due February 5, 2026



**Bilbrey Tours is on
Facebook!**

Search "Bilbrey Tours" to find our page. Click the "Like" button to receive up-to-date information from Bilbrey Tours right on your Facebook homepage. Be one of the first to hear about new tours and changes, see pictures and updates from our tours as they are happening, and keep up with everything and everyone at Bilbrey Tours!

**Great Lakes Grandeur
Cruise all Five Great Lakes
May 18* - 29, 2026 (Fly)
(12 days - 11 nights)**

Departing Abilene
Highlights Include:

- Round trip transportation from Abilene to DFW
- *Overnight in DFW area on May 18
- Round trip airfare (to Toronto / from Chicago)
- 1 night in Toronto, Canada
- 9-nights aboard Victory II
- Toronto City Tour
- Embark in Toronto, Ontario
- Scenic sailing on Lake Ontario
- Niagara Falls, Ontario
- Cleveland, OH
- Scenic sailing on Lake Erie
- Detroit, MI
- Scenic Sailing on Lake Huron
- Scenic Sailing on Lake Superior
- Sault Ste. Marie (Soo Locks), MI
- Mackinac Island, MI
- Milwaukee, WI
- Scenic Sailing on Lake Michigan
- Disembark in Chicago (Navy Pier)
- Shore excursions
- All meals aboard Victory II

**Tour is on
Standby**

\$7565 per person (2 people per room)
\$10265 per person (1 person per room)
Full payment due upon booking



Medicare does not pay outside the United States
Tour is operated by Victory Cruise Line

NOTE: Passport Required

**January
2026 Edition**

Bilbrey Tours, Inc.



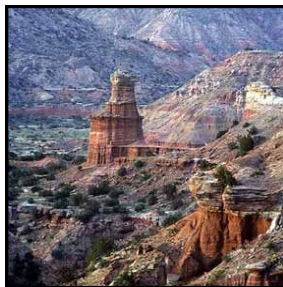
Palo Duro Canyon June 11 - 12, 2026

(2 days – 1 night)

Departing Abilene

Highlights Include:

- **TEXAS** Musical Drama set against the back drop of the Palo Duro Canyon & backstage tour
- BBQ Dinner with all the trimmings served outdoors
- Guided tour of Palo Duro Canyon
- Guided tour of Amarillo's Route 66 with a local guide as we continue to celebrate the 100th anniversary of Route 66
- Bill's Backyard Classics; featuring over 90 classics vehicles from the 1920's to 2012
- Meals: 1 continental breakfast, 1 lunch, 1 dinner



\$559 per person (2 people per room)

\$659 per person (1 person per room)

\$25 due upon booking - Final due April 21, 2026

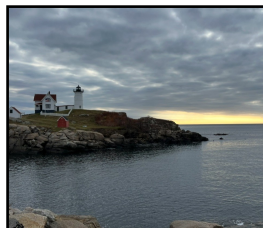
Atlantic Coastal Maine June 20* - 27, 2026 (Fly)

(8 days – 7 nights)

Departing Abilene

Highlights Include:

- Round trip transportation from Abilene to DFW
- *Overnight in DFW area on June 20
- Round trip airfare to Boston
- 2 nights - Portland, ME
- 2 nights - Bar Harbor, ME
- 2 nights - Freeport, ME
- Acadia National Park
- Portland Head Lighthouse
- Casco Bay cruise
- Bangor, ME
- Timber Tina's Lumberjack Show
- Lobster Boat Tour
- Fort Knox (ME)
- Penobscot Narrows Bridge/Observatory
- L. L. Bean Flagship Store (Freeport)
- Meals: 2 breakfasts, 5 continental breakfasts, 8 lunches or dinners



\$4075 per person (2 people per room)

\$4955 per person (1 person per room)

\$100 due upon booking - Final due March 10, 2026

Indiana Amish Country Including Floral Quilt Gardens

July 11 - 19, 2026

(9 days – 8 nights)

Departing Abilene, Big Spring, Midland & San Angelo

Highlights Include:

- 3 nights Essenhause Inn (Middlebury, IN)
- Missouri, Illinois, Indiana, and Kansas
- Essenhause Village, Bakery, and Carriage Ride
- Amish Experience Tour with demonstrations
- Meal in an Amish Home
- Shippshewana Antique Auction
- Yoder's Red Shoppes
- Floral Quilt Gardens along the Heritage Trail
- Amish Buggy Maker
- Brown Swiss Dairy Barn
- University of Notre Dame (South Bend, IN)
- Paddleboat Cruise (St Louis, MO)
- Missouri Star Quilt company (Hamilton, MO)
- Mark Twain Interpretive Center (Hannibal, MO)
- Harry S. Truman Presidential Library & Museum
- Covered Wagon City Tour (Independence, MO)
- Meals: 8 continental breakfasts, 7 lunches or dinners

\$2805 per person (2 people per room)

\$3565 per person (1 person per room)

\$50 due upon booking - Final due April 23, 2026



**January
2026 Edition**

Bilbrey Tours, Inc.



Exploring the Dakotas

Celebrating America's Semiquincentennial (250th)

August 15 - 24, 2026

(10 days – 9 nights)

Departing Abilene & San Angelo

Highlights Include:

- North Dakota, South Dakota and Nebraska
- Mount Rushmore National Memorial
- Black Hills
- Crazy Horse Memorial
- Wall Drug
- Badlands National Park
- Theodore Roosevelt Presidential Library -opening 2026
- Theodore Roosevelt National Park
- Medora Musical & Pitchfork Fondue
- Tatanka: Story of the Bison
- South Dakota Cultural Heritage Center
- Meals: 6 continental breakfasts, 3 breakfasts, 9 lunches or dinners



**Tour is on
Standby**

**\$3325 per person (2 people per room)
\$4260 per person (1 person per room)
\$50 due upon booking - Final due June 5, 2026**

Exploring the Dakotas

Celebrating America's Semiquincentennial (250th)

September 6 - 15, 2026

(10 days – 9 nights)

Departing Abilene, Big Spring & Midland

Highlights Include:

- North Dakota, South Dakota and Nebraska
- Mount Rushmore National Memorial
- Black Hills
- Wall Drug
- Crazy Horse Memorial
- Badlands National Park
- Theodore Roosevelt Presidential Library
- Theodore Roosevelt National Park
- Medora Musical & Pitchfork Fondue
- Tatanka: Story of the Bison
- Meals: 7 continental breakfasts, 2 breakfasts, 9 lunches or dinners



**\$3325 per person (2 people per room)
\$4260 per person (1 person per room)
\$50 due upon booking - Final due June 25, 2026**

****Due to popular demand, we have added another date to accommodate more travelers!****

Alpine Swiss Villages & Rails August 24 - September 1, 2026 (Fly)

(9 days – 8 nights)

Departing Abilene

Highlights Include:

- Round trip transportation from Abilene to DFW
- Round trip airfare to Zurich, Switzerland
- 6 Nights - Wengen
- 1 Night - Zurich
- Berner Oberland Rail Pass
- Swiss Rail Excursions & Transportation - Trains, Cogs, Cable Cars, Boats & Buses
- Bern
- Interlaken
- Grindelwald
- Gimmelwald
- Murren
- Lake Brienz Cruise
- Wood Carving School
- Meiringen
- Grindelwald-Männlichen Gondola



- Cableway
- Lucerne City Tour with Chapel Bridge
- Aare River Gorge
- Rosenlauri Glacier Gorge
- Meals: 7 breakfasts, 5 dinners

**\$6989 per person (2 people per room)
\$7939 per person (1 person per room)
\$600 due upon booking (non-refundable) -
Final due May 27, 2026**

*Medicare does not pay outside the United States
Tour is operated by Premier World Discovery*

NOTE: Passport Required

**Tour is on
Standby**



**January
2026 Edition**

Bilbrey Tours, Inc.



Bilbrey Tours has traveled to 60 countries: Aruba, Antigua & Barbuda, Argentina, Australia, Austria, Bahamas, Barbados, Belgium, Belize, Bulgaria, Canada, Cayman Islands, Chile, Costa Rica, Cuba, Curacao, Czech Republic, Denmark, England, Estonia, Fiji, Finland, France, Germany, Greece, Guatemala, Hungary, Iceland, Ireland, Israel, Italy, Jamaica, Jordan, Kenya, Liechtenstein, Malta, Mexico, Monaco, Nicaragua, New Zealand, Norway, Panama, Poland, Portugal, Puerto Rico, Romania, Russia, Scotland, Serbia, South Africa, Spain, St Lucia, St Maarten, Sweden, Switzerland, Thailand, The Netherlands, Uruguay, Wales and Zimbabwe.

**Thank you for traveling with
Bilbrey Tours!**

**Hawaii Cruise
NCL's Pride of America
September 9* - 20, 2026 (Fly)
(12 days - 11 nights)**

Departing Abilene

Highlights Include:

- Roundtrip transportation to DFW
- *Overnight in DFW area on Sep 9
- Roundtrip airfare from DFW
- 2 nights at Waikiki hotel
- 7-night cruise aboard *Pride of America*
- Honolulu, Oahu
- Kahului, Maui
- Hilo, Hawaii
- Kona, Hawaii
- Nawiliwili, Kauai
- Cruise Nepali Coast
- Honolulu city tour including Pearl Harbor
- Meals aboard *Pride of America*



Inside Stateroom:

\$5120 per person (2 people per room)

\$6869 per person (1 person per room)

Outside Private Balcony:

\$6285 per person (2 people per room)

\$9140 per person (1 person per room)

\$750 deposit due upon booking

Final due May 4, 2026

**Get Your Kicks On
Route 66 (Westbound)
September 19 - 26, 2026
(8 days - 7 nights)
DRIVE west / FLY home**

Celebrating the 100th Anniversary of Route 66 with a nostalgic westbound tour highlighting Route 66 through New Mexico, Arizona, Nevada & California.

**Departing Abilene
Highlights Include:**

- Route 66 west to Santa Monica, CA (end of the trail)
- 2 nights in Laughlin, NV
- 2 nights in Marina del Rey, CA
- Midpoint Café (Texas)
- Sandia Peak Aerial Tram (New Mexico)
- Hoover Dam Powerplant Tour (Nevada)
- Hoover Dam Visitor Center (Nevada)
- Lake Mead Cruise (Nevada)
- Richard Nixon Presidential Library (California)
- Los Angeles City Tour / Santa Monica Pier
- Hollywood Walk of Fame / Chinese Theatre
- Petrified Forest National Park (Arizona)
- Lowell Observatory (Arizona)
- Numerous historical attractions along Route 66
- One-way airfare from LAX to DFW
- Transportation from DFW to Abilene
- Meals: 1 breakfast, 6 continental breakfasts, 8 lunches or dinners



**\$3289 per person (2 people per room)
\$4085 per person (1 person per room)
\$100 due upon booking - Final due June 19, 2026**

**Gift Certificates
are available
Call Today!**

**January
2026 Edition**

Bilbrey Tours, Inc.



Golden Aspens of Colorado September 30 - October 7, 2026

(8 days – 7 nights)

*****FLY west / DRIVE home*****

Departing Abilene

Highlights Include:

- One-way airfare to Colorado
- Bilbrey Tours Motorcoach transportation from Colorado to Texas
- 2 nights Colorado Springs, CO
- 2 nights Canon City, CO
- Golden Belt Jeep Tour - Aspen Trail
- Pikes Peak Cog Railway (14,115' elevation)
- City Tour of Colorado Springs/Garden of the Gods
- Cumbres & Toltec Scenic Railroad w/ lunch
- U.S. Olympic & Paralympic Museum
- ProRodeo Hall of Fame and Museum of the American Cowboy
- Flying W Chuckwagon Dinner and Show
- Great Sand Dunes National Park
- Free time in Manitou Springs, CO
- Cripple Creek and Victor Narrow Gauge Railroad
- Meals: 1 breakfast, 6 continental breakfasts, 7 lunches or dinners

\$3095 per person (2 people per room)

\$3815 per person (1 person per room)

\$100 due upon booking - Final due June 30, 2026

Fall Trains & Foliage of New England October 2* - 11, 2026 (Fly) (10 days – 9 nights)

Departing Abilene

Highlights Include:

- Roundtrip transportation to DFW
- *Overnight in DFW area on October 2
- Massachusetts, Maine, New Hampshire
- Vermont, Connecticut, Rhode Island
- Mount Washington Train Excursion
- Franconia Notch State Park
- Lunch at Griswold Inn - Essex, CT
- Trapp Family Lodge
- The Vermont Country Store
- Norman Rockwell Museum
- Boston City Tour
- JFK Presidential Library & Museum
- Quincy Market
- Kennebunkport, ME
- Nubble Lighthouse
- Ben & Jerry's Ice Cream Tour
- New England's vibrant fall colors
- Meals: 2 breakfasts, 7 continental breakfasts, 8 lunches or dinners

\$4819 per person (2 people per room)

\$6075 per person (1 person per room)

\$100 due upon booking - Final due June 23, 2026



**January
2026 Edition**

Bilbrey Tours, Inc.



Autumn Trails in the Texas Hill Country

October 27 - 30, 2026

(4 days – 3 nights)

Departing Abilene and San Angelo

Highlights Include:

- 3 nights in Fredericksburg, TX
- Historic City Tour / Scenic Willow City Loop
- Longneck Manor
- Lyndon B. Johnson National Historical Visitor Ctr
- Lyndon B. Johnson Boyhood Home
- Luckenbach Texas
- Wildseed Farms
- Free time in Historic Downtown Fredericksburg
- National Museum of Pacific War
- Museum of Western Art (Kerrville)
- James Avery Craftsman Center
- Meals: 3 breakfasts and 4 lunches or dinners

\$1255 per person (2 people per room)

\$1515 per person (1 person per room)

\$25 due upon booking - Final due August 26, 2026

Branson Christmas November 8 - 13, 2026

(6 days – 5 nights)

Departing Abilene, Big Spring and Midland Highlights Include:

- *Miracle of Christmas* - Sight and Sound Theatre
- Clay Cooper's Country Express
- The Haygoods
- Presley's Country Jubilee
- The Duttons
- Lunch at College of Ozarks
- Truth Travelers
- Bass Pro Shop (Springfield, MO)
- Local shopping and sightseeing
- Meals: 5 cont. breakfasts and 5 lunches or dinners



\$1699 per person (2 people per room)

\$2069 per person (1 person per room)

\$25 due upon booking-Final due September 11, 2026

Branson Christmas November 1 - 6, 2026

(6 days – 5 nights)

Departing Abilene and San Angelo

Highlights Include:

- *Miracle of Christmas* - Sight and Sound Theatre
- Clay Cooper's Country Express
- The Haygoods
- Presley's Country Jubilee
- The Duttons
- Lunch at College of Ozarks
- Truth Travelers
- Bass Pro Shop (Springfield, MO)
- Local shopping and sightseeing
- Meals: 5 cont. breakfasts and 5 lunches or dinners



\$1699 per person (2 people per room)

\$2069 per person (1 person per room)

\$25 due upon booking - Final due September 3, 2026

Dickens on the Strand Galveston, TX

December 3 - 6, 2026

(4 days – 3 nights)

Departing Abilene Highlights Include:

- 53rd Annual Dickens on the Strand Festival
- The Queen's Parade
- Galveston City Tour
- Gulf beaches
- Moody Gardens Festival of Lights
- Ice Land (Ice Sculptures)
- 2 nights at Holiday Inn Resort
- George H.W. Bush Presidential Library and Museum - College Station
- Santa's Wonderland, a Texas Christmas Experience
- Meals: 2 breakfasts, 1 continental breakfast, 3 lunches or dinners



\$1390 per person (2 people per room)

\$1825 per person (1 person per room)

\$25 due upon booking - Final due August 27, 2026

**January
2026 Edition**

Bilbrey Tours, Inc.



The Gift of Christmas
Prestonwood Baptist Church
December 9 - 10, 2026
 (2 days – 1 night)

Departing Abilene

Highlights Include:

- *The Gift of Christmas* performance features a living Nativity, live orchestra and a 1,000-member cast, flying angels, and more!
- The 12 Days of Christmas are showcased at the Dallas Arboretum, each in a glass encased gazebo
- George W Bush Library and Museum features “Christmas at the White House”
- Shopping time at the elaborately decorated Galleria Dallas with a variety of shops to include Nordstrom, Macy’s, Tiffany & Co, American Girl, and H & M
- Meals: 1 continental breakfast,
2 lunches or dinners

\$510 per person (2 people per room)

\$569 per person (1 person per room)

\$25 due upon booking - Final due October 9, 2026

Nashville Opryland Christmas
December 11 - 16, 2026
 (6 days – 5 nights)

Departing Abilene

Highlights Include:

- 3 nights at Gaylord Opryland Resort
- Grand Ole Opry - country music’s biggest stage
- Christmas Dinner Show at Gaylord Opryland Resort
- Nashville City Tour
- General Jackson Lunch Cruise
- ICE! (life-sized sculptures in ice)
- Delta River Flatboat
- “Treasures for the Holidays” (Arts, Antiques and Crafts Show - Opryland Resort)
- Johnny Cash Museum
- Free time on Lower Broadway
- Meals: 3 breakfasts, 2 continental breakfasts,
4 lunches or dinners



\$2245 per person (2 people per room)

\$2825 per person (1 person per room)

\$25 due upon booking - Final due October 1, 2026

2027 Tour

Mediterranean Cruise
Including Spain, France, Italy,
Greece & Turkey
April 9 - 25, 2027 (Fly)
 (17 days - 16 nights)

Departing Abilene

Highlights Include:

- Roundtrip transportation to DFW
- Roundtrip airfare from DFW
- Barcelona, Spain (pre-cruise)
- 14-night cruise aboard *Sun Princess*
- Mallorca, Spain
- Marseille, France
- Corsica, France
- Genoa, Italy
- Florence, Italy
- Pisa, Italy
- Rome, Italy
- Naples, Italy
- Crete, Greece
- Kusadasi, Turkey
- Mykonos, Greece
- Athens, Greece
- Meals aboard *Sun Princess*

****Price does not**
 include airfare or pre-
 cruise stay in Barcelona
 Pricing will become
 available for purchase
 later in 2026.**

Cruise Only Cost**

Inside Stateroom:

\$3830 per person (2 people per room)

\$6539 per person (1 person per room)

Outside Private Balcony:

\$5429 per person (2 people per room)

\$9735 per person (1 person per room)

\$750 deposit due upon booking

Final due November 2, 2026

NOTE: Passport Required



**January
2026 Edition****Bilbrey Tours, Inc.**

TERMS AND CONDITIONS

Bilbrey Tours, Inc. has been in business since 1990 and is a member of the National Tour Association, Cruise Lines International Association, American Bus Association, Abilene Chamber of Commerce and is a BBB Accredited Business.

Bilbrey Tours owns luxury motorcoaches with pull-down window shades, video monitors, foot rests, cup holders, reclining seats, individual map pockets, large overhead storage and restroom facility.

Photographs of travelers may be used in publications, social media, Bilbrey Tours webpage and at travel shows. Anyone declining permission must notify Bilbrey Tours Inc in writing.

Smoking/Liquor

Smoking, e-cigarettes and alcoholic beverages are not permitted on the motorcoach. Frequent (about every two and a half hours) rest/meal stops afford smoking opportunities.

Physical Disability

In compliance with the Americans With Disabilities Act, Bilbrey Tours, Inc. will make reasonable efforts to accommodate the special needs of tour participants. Persons requiring assistance must be accompanied by a companion who is capable of and totally responsible for providing the assistance. Neither Bilbrey Tours, Inc. personnel nor its suppliers may physically lift or assist clients onto transportation vehicles or within hotel rooms. Travelers needing special assistance must notify Bilbrey Tours, Inc. at the time of booking to determine what assistance may reasonably be made available by Bilbrey Tours, Inc.

Tour Price Includes

Transportation from Abilene (other cities noted), hotel accommodations, hotel baggage handling for one piece of luggage, admissions to included attractions, meals as specified, services of a tour escort, gratuity for tour escort and gratuity for driver, unless otherwise noted.

Tour Prices are subject to fuel supplement surcharges by airlines, cruise lines and other vendors.

Unused Features

No refund or credit will be given, in whole or in part, for unused air transportation, land transportation, hotel accommodations, or other features you voluntarily do not use.

Single / Triple Accommodations

Please understand that a "single" reservation means single accommodations at the hotels, and does not guarantee a double seat on the motorcoach. Be advised that "triple" accommodations at the hotels will be two beds only. It does not cover the cost of a rollaway.

Seating

In an effort to be fair to all travelers, Bilbrey Tours, Inc. will use a seat-rotation system. Your tour escort will remind you when to rotate seats. If you anticipate any difficulty with this system, you must contact Bilbrey Tours, Inc. prior to tour.

Changes In Accommodations

If a single room must be assigned because your roommate cancels (even if at the last moment or while on the tour), we must out of necessity charge you the supplement or pro rata thereof since the hotels make no allowance. Likewise, if one of three roommates cancels, resulting in double, rather than triple occupancy, your final billing must be based on double occupancy.

Travel Documents

Your travel documents will be sent approximately two weeks prior to departure. Documents include tour itinerary, departure and arrival information, hotel information, clothing suggestions, baggage tags, plus any helpful hints.

Agency Responsibility

Bilbrey Tours, Inc., Abilene, Texas acts solely as your agent arranging for transportation, lodging, and sightseeing activities, and will not be liable for any delayed departures or arrivals or for any damages, losses or injuries to person or property. Full payment by the tour member constitutes the tour member's acceptance of these terms and conditions.

No liability is assumed in connection with any transportation, restaurants or lodging used for the duration of these tours. Although every effort is made to handle your luggage carefully, we are not responsible for lost, stolen, or damaged articles, including luggage or personal property. We reserve the right to cancel any tour prior to departure, and in such case, our total obligation will be only to refund all payment toward said tour. Bilbrey Tours Inc. will not be liable for matters beyond our control including but not limited to traffic congestion, airline delays, airline cancellations, weather conditions, Government shutdowns or acts of God. Bilbrey Tours, Inc reserves the right to refuse service to any person.

Refund Policy

For cancellations after time of booking to date of final payment:

Full refund less penalties assessed by airlines, cruise lines and other vendors.

For cancellations from date of final payment to 15 days prior to travel:

50% refund less penalties assessed by airlines, cruise lines and other vendors.

For cancellations 14 days to day of travel:

No refund.

Travel Insurance

An optional Travel Insurance plan is available for purchase on overnight tours through TripAssure. Bilbrey Tours encourages the purchase of a Travel Protection Plan to help protect your investment, your belongings and most importantly you! Bilbrey Tours makes the Tour & Cruise Travel Protection Plans easily available. For complete details and to purchase a plan, follow this link:

<https://atc.tripassure.com/main/?welcome=BILB3262TX>

Cancellation Policy

All cancellations must be reported to Bilbrey Tours, Inc. and TripAssure when the problem causing the need to cancel arises.

Make checks payable to:

**Bilbrey Tours, Inc.
3262 South 27th Street
Abilene, Texas 79605**